

DISABLED PEOPLE'S ARCHIVE CENTRAL LIBRARY SHOWCASE EXHIBITION

PHOTOGRAPHS FROM THE DIGITAL SCREENS

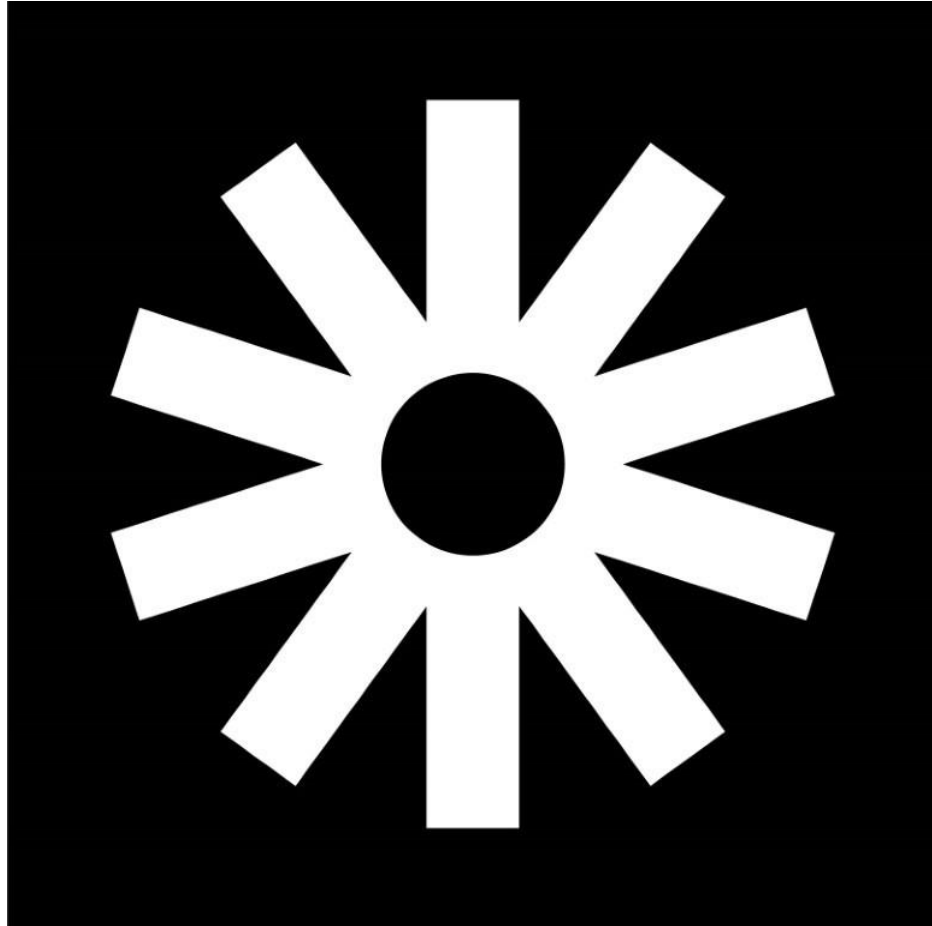
OCTOBER 2024 – JANUARY 2025



WELCOME!

- In this PDF you will find copies of the photographs that are available to view on the digital touchscreens at our 'Showcase Exhibition' at Manchester Central Library, running from October 2024 until January 2025.
- Each photograph has a unique catalogue number and alt-text description available on this touch screen.
- We have made this PDF so that people can view these photographs online anytime and for people to have the option to zoom in and look at the photographs in detail.
- We have also made a Word document with each photograph's unique catalogue number and which page/slide it appears on this PDF. This is so those using screen readers can enjoy our collection.
- If you want to use any of the images here, please email archive@gmcdp.com for high quality images and for us to permission.
- We are using this exhibition as an experiment on exhibition accessibility in a space we cannot change. If you have any feedback, comments or questions please email; archive@gmcdp.com

GMCDP PHOTOGRAPHS



**Greater
Manchester
Coalition
of Disabled
People**



GMCDD

1985
1986
1987

GMCDD 1985-1986
GMCDD 1987-1988
GMCDD 1989-1990
GMCDD 1991-1992
GMCDD 1993-1994
GMCDD 1995-1996
GMCDD 1997-1998
GMCDD 1999-2000
GMCDD 2001-2002
GMCDD 2003-2004
GMCDD 2005-2006
GMCDD 2007-2008
GMCDD 2009-2010
GMCDD 2011-2012
GMCDD 2013-2014
GMCDD 2015-2016
GMCDD 2017-2018
GMCDD 2019-2020
GMCDD 2021-2022



FIRE EXIT



m

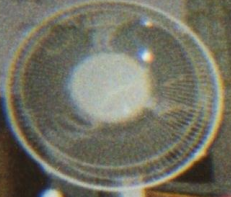
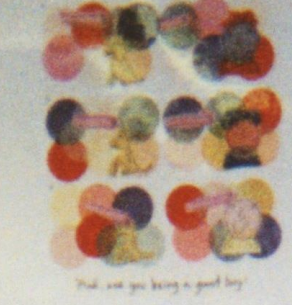
c

D

P

The Young Peoples' Advisor & Board

The Young Peoples' Advisor & Board





GMCDP

Disabled People



GREATER MANCHESTER COALITION
OF DISABLED PEOPLE

Disabled
people
Don't
leave it
to others
involved!

- The Greater Manchester Coalition of Disabled People
- The Greater Manchester Coalition of Disabled People
- The Greater Manchester Coalition of Disabled People

coalition
of disabled people
GMCDP

Disabled
people
Don't
leave it
to others
Get
involved!

GREATER
MANCHESTER
coalition
of disabled people
GMCDP

Disabled
people
Don't
leave it
to others
Get
involved!

GREATER
MANCHESTER
coalition
of disabled people
GMCDP

Stacks of brochures and a small potted plant on the table.

Altrincham

41

3164

DISABLED PEOPLE DEMAND
ADAPT

DISABLED PEOPLE DEMAND
RIGHTS
NOT
CARDS

DISABLED PEOPLE DEMAND
RIGHTS
NOT
CARDS

DISABLED PEOPLE DEMAND
ADAPT

DISABLED PEOPLE DEMAND
ADAPT

DISABLED PEOPLE DEMAND
RIGHTS
NOT
CARDS





GMB buses
East Didsbury 40

GMB buses
Winstow Road
Northenden
Browley Road 43
WARRAGE 199A

GMB buses
Altrincham 41

White car

Silver car

Man in red shirt

Stroller

Group of people





LITY

8.00am
BREAKFAST TO EAT IN OR TAKE OUT

That Patronises

G

TT's SALO

FREE

Greater Manchester

Credit







PROTEST PHOTOGRAPHS







CHARITY NOT TELEVISION COY

BLOCK TELEVISION

RIGHTS N
DISABLED

STOP

WOMEN
TELEVISION

THE LONDON TELEVISION CENTRE



CHARITY
NO
TELETHON
NO

ION CENTRE

THE
LONDON
TELEVISION
CENTRE



THE LONDON TELEVISION CENTRE

ENTRY

ENTRY

LO
TEL
CE







What disables us is society

Why we're angry



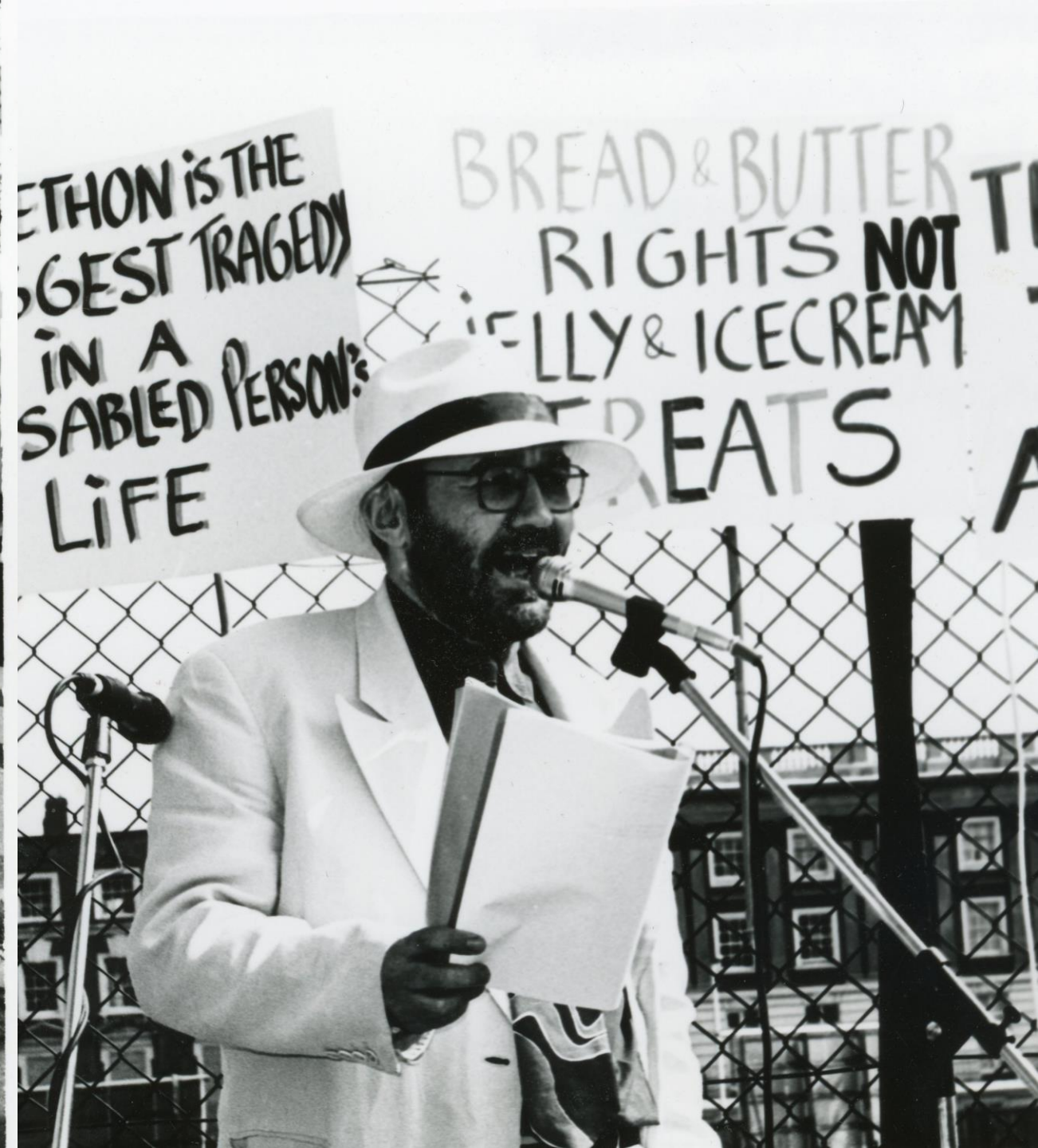
What disables us is society



The unions should fight discrimination.

Wake Me Up

TURN OFF TELEVISION
BREAK THE PARTIALITY OF OURS
GIVE US







DISABLED
WILL DIE
IF
BENEFITS
ARE CUT

FREE
OUR
PEOPLE

TEST
TONY
NOT US

DAMN
WITHOUT



ach
LONDON

Norfolk
COU

Countybus





UNISON
LISTEN
MR CLARKE
WE NEED
CIVIL RIGHTS
TO ACCESS

DON'T
COUNT
US OUT
COUNT
US IN

DON'T
CHANGE
US KEN

WE WANT
RIGHTS
NOT EXCUSES

CIVIL
RIGHTS

NOT
A
RIGHTS
CHARITY

NOTE FOR
VOTERS
FOR

END
ABSENT MP'S WILL
BE VOTING NO
TO CIVIL RIGHTS
PEOPLE



INDEPENDENT LIVING PHOTOGRAPHS






LOOKING
GOOD
FEELING
GOOD


DISABLED
LIVING
GOOD



Donations List
Columbus Day 2010
Friday March 6th 2010
Key rings \$2.00
T-shirts \$10.00



INFORMATION

REMAP

APPROXIMATE COST

INFORMATION

Key
Date
Columbus Day 2010
Friday March 6th 2010

NORTHERN COMPUTER MARKETS
THE NORTH'S LARGEST
COMPUTER MARKETS at BOWLERS
For Details Phone 01706 299902 or Contact Reception

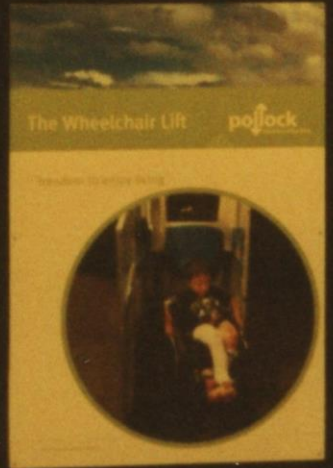
pollock

pollock

30 POLLOCK LIFTS



The Wheelchair Lift pollock



Smith Nephew











Hire this
Scooter
FREE
061 839 2552









DISABLED WOMEN PHOTOGRAPHS











ME, FROM ONE OF THE
LD'S GREAT VEHICLES.

WELCOME FROM ONE OF THE
WORLD'S GREAT VEHICLES.

To really go
where all others
never go... before
[unclear]

**PISS
ON
PITY**

DAN SAYS
CERULLO DISAILES









Lorraine
Gradwell
1953-2017

And what has FDP been doing

So what could FDP mean to you?

Sound about THE REALITY SHOW

The group is growing in popularity all the time and has a lot of meeting activity in the college. We get invited to give talks at other colleges.

The group members are interested in a wide range of social and media subjects from sports events and clubbing to watching the cinema and making their own documentary videos.

Getting a better idea of it yourself, you have a right to understand the situation and to make your own decisions. We will be holding a meeting to discuss this on Wednesday, 14th March, 7.30pm.

Since it was set up, the FDP has made contact with many young disabled people in Manchester, Oxford and beyond. It has held discussion groups in schools, colleges and day centres, organised letter clubs in the sports and arts, ranging from swimming to computer music. We'll be doing long video courses and producing useful information guides on subjects which affect you.

EDGE EDGE EDGE
 Social Skills Group Emerging

DATE	TIME	LOCATION	TOPIC
MON 2	7.30
TUE 3	7.30
WED 4	7.30
THUR 5	7.30
FRI 6	7.30
SAT 7	7.30
SUN 8	7.30
MON 9	7.30
TUE 10	7.30
WED 11	7.30
THUR 12	7.30
FRI 13	7.30
SAT 14	7.30
SUN 15	7.30
MON 16	7.30
TUE 17	7.30
WED 18	7.30
THUR 19	7.30
FRI 20	7.30
SAT 21	7.30
SUN 22	7.30
MON 23	7.30
TUE 24	7.30
WED 25	7.30
THUR 26	7.30
FRI 27	7.30
SAT 28	7.30
SUN 29	7.30
MON 30	7.30
TUE 31	7.30







YOUNG DISABLED PEOPLE PHOTOGRAPHS





ALLAN MOONEY, D.O.
M.D., F.A.C.O., M.D., M.P.T.
OSTEOPATH

OSTEOPATHY
PRACTICE HOURS
Monday 9:00am - 5:30pm
Tuesday 9:30am - 5:30pm
Wednesday 9:30am - 5:30pm
Thursday 9:30am - 5:30pm
Friday 9:30am - 5:30pm
Saturday 9:00am - 10:00am

PARTLAN
D.O.
CONSULTANT
THERAPIST

MY PAIN
NEW
PAIN
PAIN

Foot
Ankle
Knee

ALL ABOUT
PAIN
PAIN

BACK-C
DU

TED

SATURDAY



The MB Family Club - great bowling value for all the family! Free membership. Ask at reception for details.
Family Club

M B M B M

19 20 21

in the SKY is a CHAIR POST

BANNER REMOVAL TEAM

MB



Yellow t-shirt and purple leggings.

BARRIER REMOVAL TEAM

I'm to SEW

DISABILITY RIGHTS

KIKO

Blue checkered shirt and blue pants.

Budweiser™

KING OF BEERS™

Z

The
Sunday Jam
It's A Jam
It's On Sunday
Afternoon









ART AND ARTWORKS PHOTOGRAPHS



















Christmas Yourself

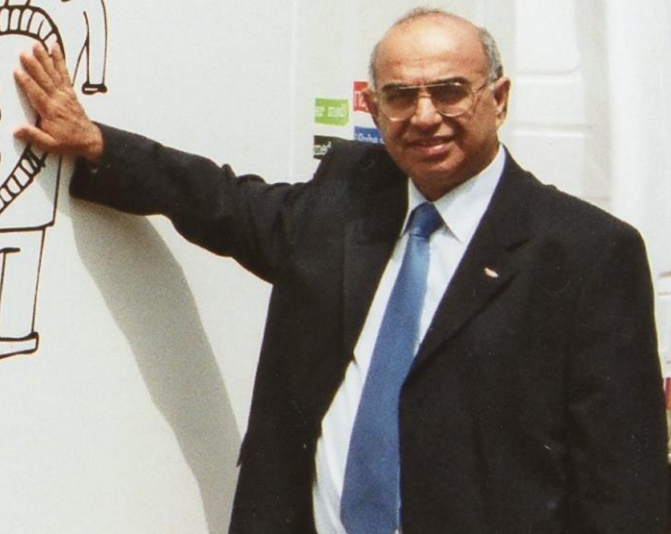


Stay
happy!

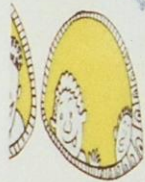


DISABLED PEOPLE'S INTERNATIONAL EVENTS PHOTOGRAPHS





Persones Handicapades
Menschen mit Behinderung



EN 400 203 078





